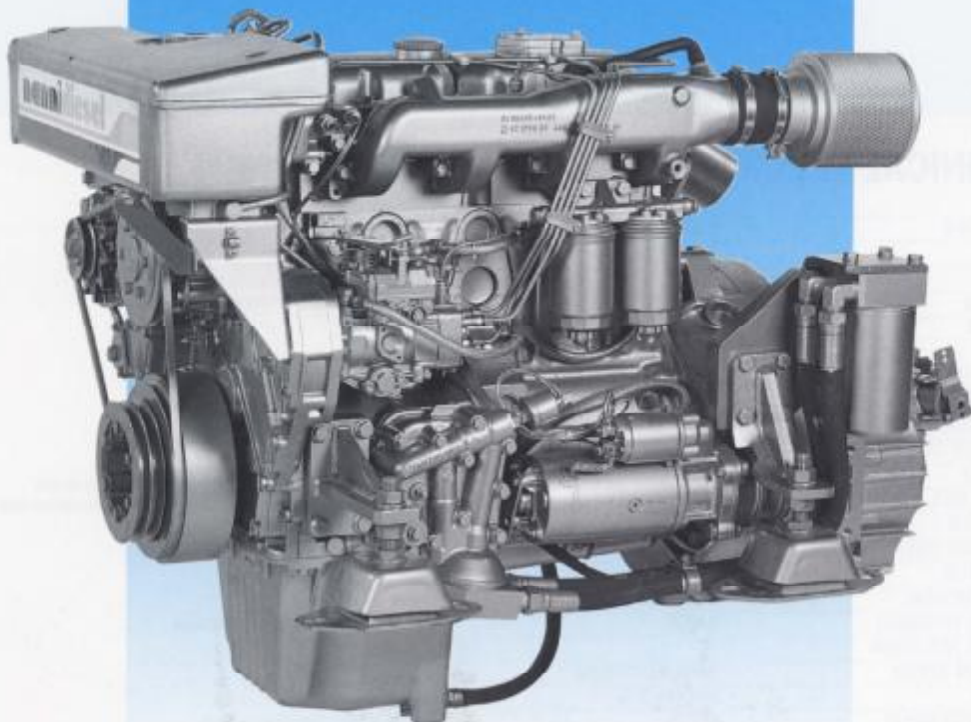


# MARINE DIESEL ENGINES

## 4.440 E 73,6 KW (100 HP)



**NANNI DIESEL 4.440 E**, a 4 cylinder-in-line engine displacing 4.4 L. Based on MAN. Naturally aspirated. Powerful, compact, economical and quiet.

#### CONSTRUCTION

Cast crankcase with interchangeable dry liners - 5 bearing crankshaft with forged counter-weights and conrods - 3-ring pistons cooled with internally injected oil.

#### CYLINDER HEAD AND VALVE TRAIN

Two twin-cylinder heads with inlet and exhaust valves, and reinforced valve seats. Forged camshaft with hardened cams and bearing surfaces.

#### LUBRICATION

Pressurized system with geared oil pump - Replaceable oil filter - Oil cooler in heat exchanger.

#### FUEL SYSTEM

Direct injection using a BOSCH injection pump with mechanical governor - Electric stop - Fuel lift pump - Two in-line fuel filters for ease of maintenance.

#### COOLING

Thermostatically controlled fresh-water engine cooling with heat exchanger - Optional hot water take-off for boiler or heater.

#### GEARBOX

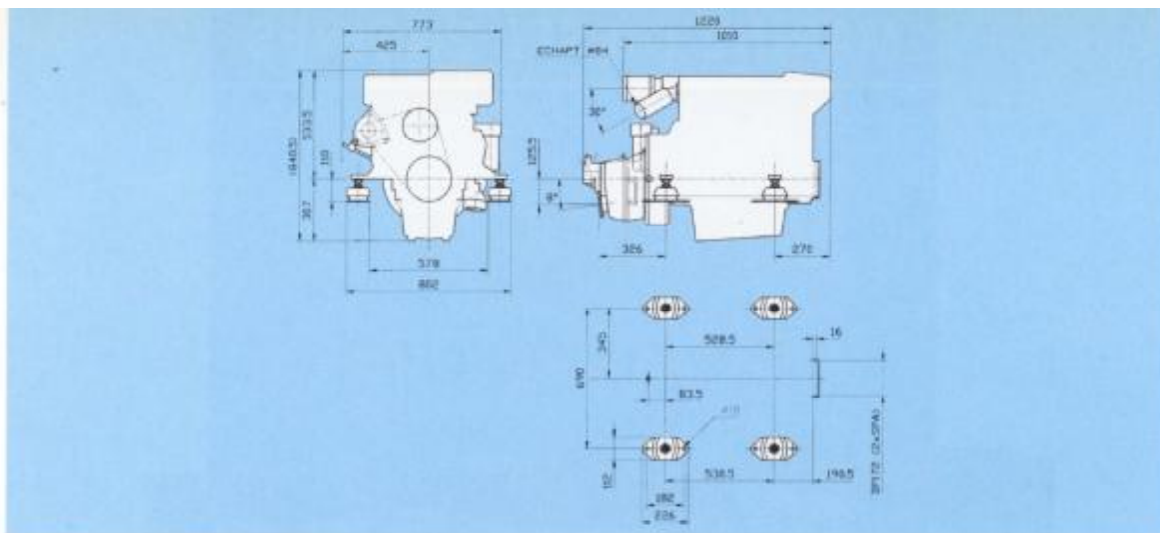
Hydraulic gearbox driven through a VULKAN damper plate, including oil cooler.

#### APPLICATIONS

The 4.440 E is the latest technology, complete and ready to install in single or twin installations, for pleasure or commercial craft.

# nannidiesel

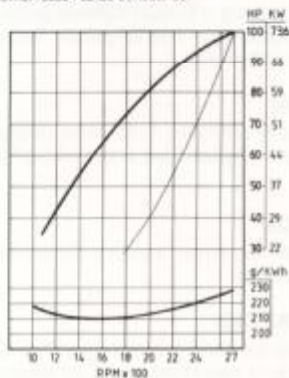
MARINE PROPULSION



## TECHNICAL SPECIFICATIONS

ENGINE TYPE	4.440 E
BASIS	MAN D0824 E
FUEL	DIESEL
INJECTION	DIRECT
PRINCIPLE	VERTICAL - 4 STROKE
COOLING	HEAT EXCHANGER
DISPLACEMENT	4,58 LI (279,5 CI)
BORE / STROKE	108 X 125
COMPRESSION RATIO	17/1
NUMBER OF CYLINDERS	4 IN LINE
AIR INTAKE	NATURALLY ASPIRATED
WEIGHT (INCL. GEARBOX)	475 KG
MAX POWER	73,6 KW (100 HP)
RPM AT MAX OUTPUT	2700
ALTERNATOR	55 A 28 V
STARTER MOTOR	4 KW 24 V
FLYWHEEL HOUSING	SAE 3
FLYWHEEL ROTATION	
VIEW FROM STERN	ANTICLOCKWISE
GEARBOX	HYDRAULIC
DIAMETER NOMINAL	
EXHAUST	84 MM
FUEL PIPE	10 MM
SEAWATER INTAKE	32 MM
INSTALLATION ANGLE	15°

SPECIFICATIONS SUBJECT TO CHANGE WITHOUT NOTICE. THESE SPECIFICATIONS ARE FOR PLEASURE APPLICATION ONLY, FOR OTHER USES PLEASE CONSULT US.



DISTRIBUTED BY :

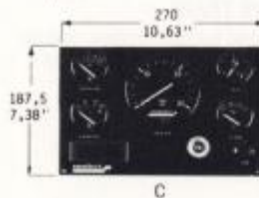


## STANDARD EQUIPMENT

- Heat exchanger
- Fresh water pump
- Thermostat
- Sea water pump
- Fresh water cooled exhaust manifold
- Exhaust elbow with water injection
- Injection pump
- Fuel lift pump
- Fuel filter
- Oil filter
- Oil drain pump
- Electric system 24 V
- Electric stop
- REMOTE INSTRUMENT PANEL C :
  - oil pressure pilot light and acoustical alarm
  - water temperature pilot light and acoustical alarm
  - alternator pilot light
  - key start
  - stop bush botton
  - tachometer
  - voltmeter
  - water temperature gauge
  - oil pressure gauge
  - hour counter
- 4 Mt intermediate wiring
- Hydraulic gearbox
- Control cables mounting points
- Flex mount
- Set of tools
- Operator's manual
- Warranty certificate

## ACCESSORIES

- Instrument panel for flying bridge
- PTO pulley
- Coupling
- Shaftline
- Propeller
- Remote control
- Remote cables
- Sea water hoses
- Fuel hoses
- Sea water filter



# nannidiesel

NANNI INDUSTRIES S.A.  
 Zone Industrielle - Avenue Marlotte - B.P. 107 - 33260 LA TESTE - FRANCE  
 TEL. NR.: (33) (05) 56 22 30 60 - FAX. NR.: (33) (05) 56 22 30 79